

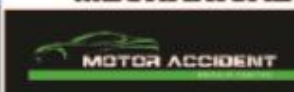


2018

Tall Timbers

SMITHTON, TASMANIA

HELLYER RALLY



buckbymotors
www.buckbymotors.com.au

SPECTATOR GUIDE

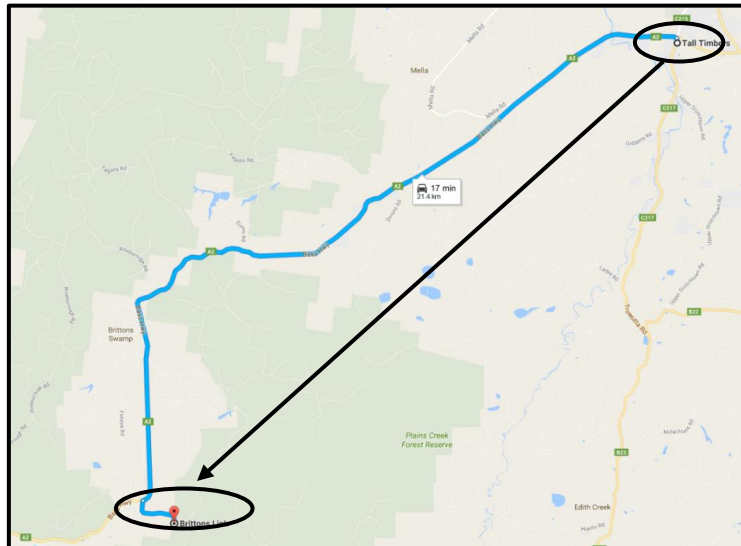
ENTRY LIST

Car	Driver / Co-Driver	Car Make	No
1	Tim AUTY/ John MITCHELL	1991 Mazda 323 GTR	53
2	Jamie VANDENBERG/ Simon VANDENBERG	Mitsubishi Lancer Evo9	80
3	Bodie READING/ Alex MALCOLM	Subaru WRX STI	21
4	Stephen MAGUIRE/ Stuart BENSON	Mitsubishi Lancer EVO5	15
5	Kurt WYLIE/ Eli WILSON	2006 Subaru WRX STI	55
6	Keith ABLITT/ Adrian HODGETTS	Mitsubishi Lancer Evo7	8
7	Kade BARRETT/ David GUEST	1977 Plymouth Fire Arrow	16
8	Stephen TURNER/ Mitch NEWTON	2009 Ford Fiesta R2	71
9	Nic GRAVE/ Rebecca SHELDRIK	2003 Subaru RS Impreza	17
10	Ben NEWMAN/ Steve GLENNEY	2005 Subaru Impreza RS	45
11	Aiden PETERSON/ Gavin JOHNSTONE	1990 Daihatsu Charade	35
12	Mike PRITCHARD/ Adam BUTLER	2004 Subaru Impreza RS	52
13	Mark KYLE/ Danial DAVIES	1972 Datsun 1600	72
14	Crichton LEWIS/ Anthony CARR	2005 Subaru Impreza RS	39
15	Bill CROMARTY/ Hugh MASLIN	1977 Mitsubishi Lancer	83
16	Bill FULTON/ Jason MILNER	2004 Subaru RS	13
17	Elliot RITCHIE/ Doug AUSTIN	2002 Subaru Impreza RS	19
18	Adrian WHIDDON/ Kevin QUIGLEY	1981 Datsun Stanza	23
19	Mitch ROBERTS/ Sara ROGERS	1989 Mazda MX5	12
20	David ALLWRIGHT/ Braiden SCOTT	1973 Mazda RX2	103
21	Rhys ELPHINSTONE/ Rob SHEPPARD	1980 Holden Commodore	10

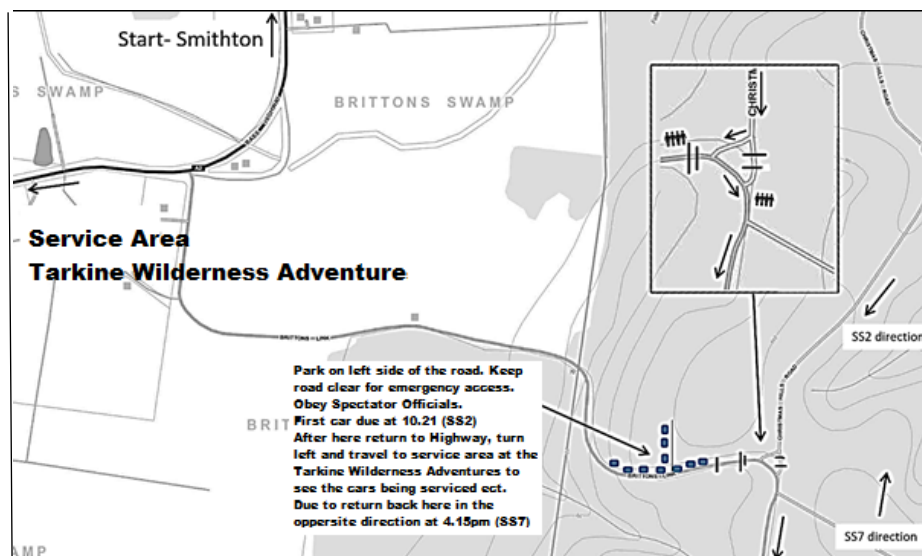
INSTRUCTIONS FOR SPECTATORS

- The start venue is Tall Timbers, cars are there from 8.30am – 10.30am
- Competitors are waved off from under the foyer at Tall Timbers, the first car is waved off at 9.45am, the next cars at 2 minute intervals
- Please drive carefully on the gravel roads and be careful of cows crossing at times, be patient and wait for a gap to pass through.

Spectator point 1 is Brittons Link Road



- From Tall Timbers turn right onto Scotchtown Road (C217) for 110m
 - At the roundabout, take the 1st exit onto Bass Highway (A2) towards Marrawah, travel 20.1km
 - Turn left onto Brittons Link Road, caution gravel road, take it easy, travel 1.2km
 - Spectator point is located under the mobile phone tower
- The first car expected at **10.21am**.
This point is used again at **3.10pm** in the opposite direction.



Cars can also be seen at the Dismal Swamp service park at 10.43am, 12.23pm, 2.28pm.

Disclaimer

Motor Sport Activities are inherently dangerous recreational activities and there is significant risk of injury, disability or death.

If you do not wish to be exposed to such risks, then you should not attend at or participate in Motor Sport Activities.

WARNING: If you participate in these activities your rights to sue the supplier under the Competition and Consumer Act 2010 if you are killed or injured because the activities were not supplied with due care and skill or were not reasonably fit for their purpose, are excluded, restricted or modified in the way set out in or on this sign.

In exchange for being able to attend or participate in the Motor Sport Activities, **you agree:**

- to release the Confederation of Australia Motor Sport Ltd (**CAMS**) and the **Entities*** to the extent that any or all of them are providing Recreational Services from all liability for:

a) your **death;**

b) any **physical or mental injury** (including the aggravation, acceleration or recurrence of such an injury);

c) the contraction, aggravation or acceleration of a **disease;**

d) the coming into existence, the aggravation, acceleration or recurrence of any other **condition, circumstance, occurrence, activity, form of behaviour, course of conduct or state of affairs:**

i. that is or may be harmful or disadvantageous to you or the community; or

ii. that may result in harm or disadvantage to you or the community,

howsoever arising from your participation in or attendance at the Motor Sport Activities;

- to indemnify and hold harmless and keep indemnified CAMS and each of the Entities to the maximum extent permitted by law in respect of any Claim by any person; and

- to attend at or participate in the Motor Sport Activities at your own risk.

NOTE: The change to your rights, as set out in or on this sign, does not apply if your death or injury is due to reckless conduct on the supplier's part. "Reckless Conduct" means conduct where the supplier of the recreational services is aware, or should reasonably have been aware, of a significant risk that the conduct could result in personal injury to another person and engages in the conduct despite the risk and without adequate justification. See section 139A of the Competition and Consumer Act 2010.

*A full list of CAMS associated entities can be viewed at <http://www.cams.com.au/get-involved/events/disclaimers>.



buckbymotors
www.buckbymotors.com.au